

**PERIMETER**  
 SURVEYING & MAPPING  
 Certificate of Authorization No. LB7264  
 Prepared by: Jeff S. Hodapp, P.S.M.  
 947 Clint Moore Road  
 Boca Raton, Florida 33487  
 Tel: (561) 241-9886  
 Fax: (561) 241-5182

# ATLANTIC COMMONS - PLAT FIVE

A REPLAT OF PORTIONS OF TRACTS 1-3 AND 30-35 IN SECTION 17, TOWNSHIP 46 SOUTH, RANGE 42 EAST,  
 AND PORTIONS OF TRACTS 65, 66, 94-99 AND 126-128 IN SECTION 8, TOWNSHIP 46 SOUTH, RANGE 42 EAST,  
 OF "PALM BEACH FARMS CO. PLAT NO.1" (P.B. 2, PGS 26-28, P.B.C.R.)  
 PALM BEACH COUNTY, FLORIDA.

20

**LEGEND:**

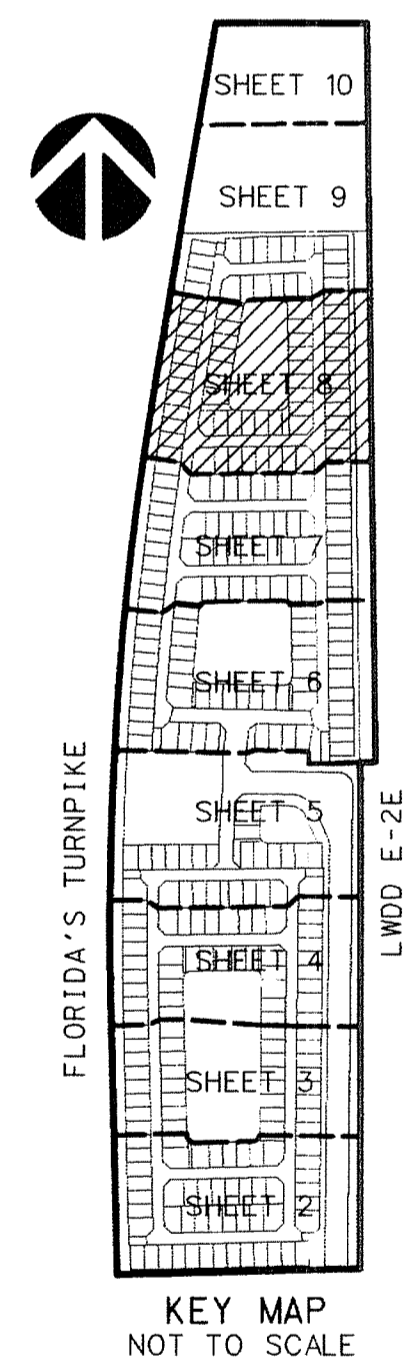
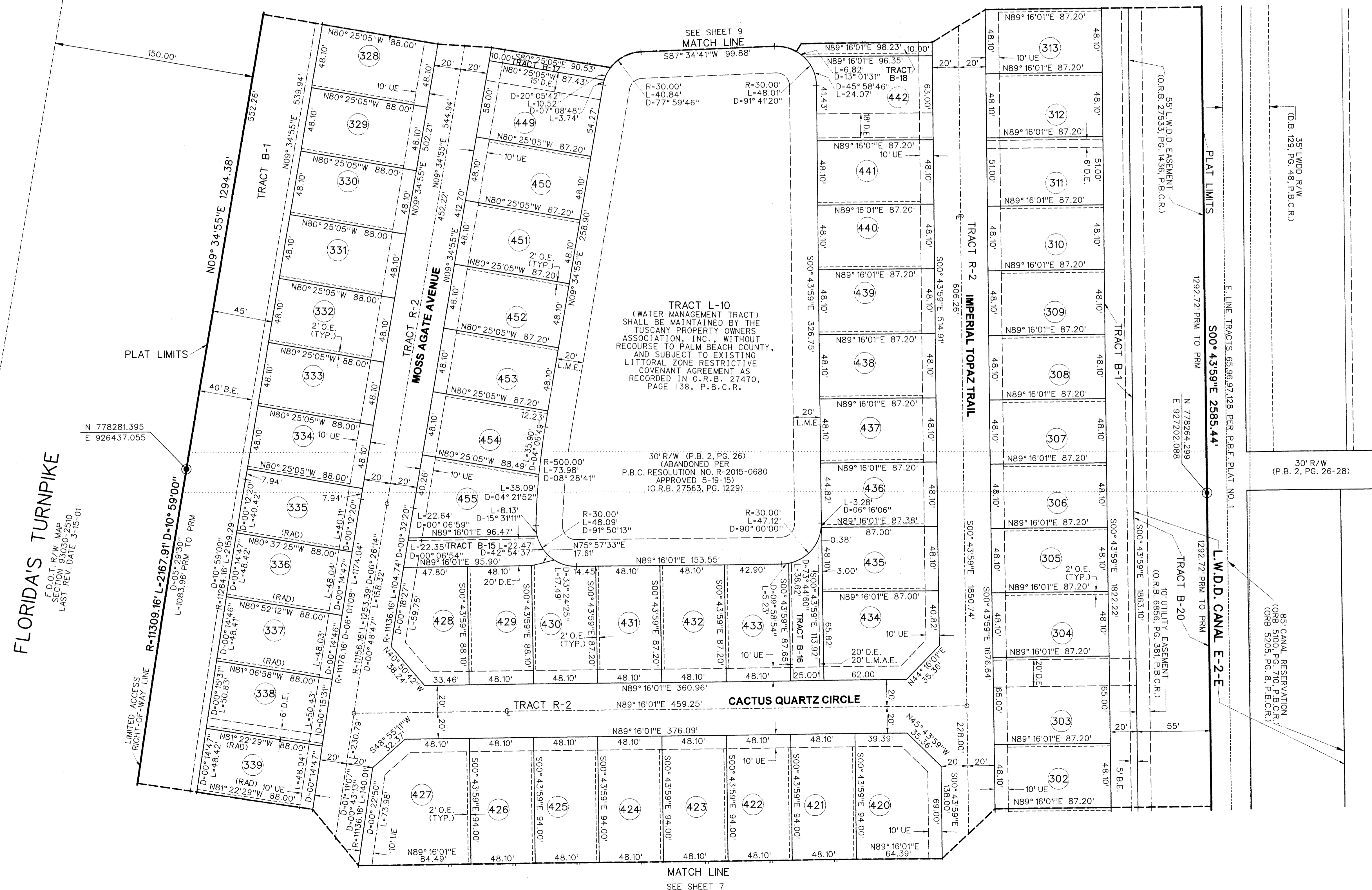
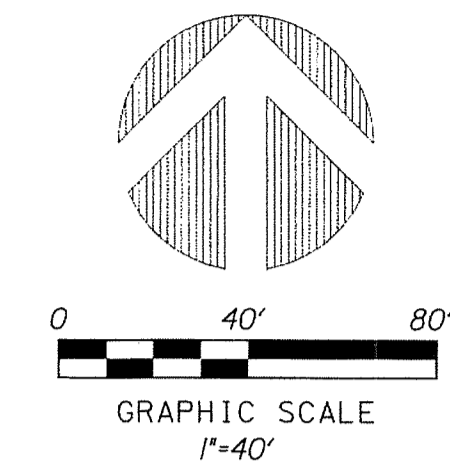
- SET P.R.M. (UNLESS OTHERWISE NOTED) 1/4" X 1/4" CONC. MON. WITH ALUMINUM DISK STAMPED P.R.M. #LB7264
- PERMANENT CONTROL POINT (NAIL & DISK #LB7264)
- CENTERLINE

**ABBREVIATIONS:**

- ALUM. ALUMINUM
- B.E. BUFFER EASEMENT
- CH. CHORD
- CHB. CHORD BEARING
- CONC. CONCRETE
- COR. CORNER
- D. DELTA (CENTRAL ANGLE)
- D.E. DRAINAGE EASEMENT
- D.T. DRIVEWAY TRACT
- FND. FOUND
- L.A.E. LIMITED ACCESS EASEMENT
- L.B.E. LANDSCAPE BUFFER EASEMENT
- L.B. LICENSED BUSINESS
- L.E. LANDSCAPE EASEMENT
- L.M.E. LAKE MAINTENANCE EASEMENT
- L.M.A.E. LAKE MAINTENANCE ACCESS EASEMENT
- L.S. LICENSED SURVEYOR
- L.S.E. LIFT STATION EASEMENT
- L.W.D.D. LAKE WORTH DRAINAGE DISTRICT

- MON. MONUMENT
- O.E. OFFICIAL RECORDS BOOK
- O.R.B. OFFICIAL RECORDS BOOK
- N.R. NON-RADIAL
- P.B. PLAT BOOK
- P.B.C. PALM BEACH COUNTY
- P.B.C.R. PALM BEACH COUNTY RECORDS
- P.B.C.U.E. PALM BEACH COUNTY UTILITY EASEMENT
- P.C. PAGE
- P.C.P. PERMANENT CONTROL POINT
- P.O.B. POINT OF BEGINNING
- P.O.C. POINT OF COMMENCEMENT
- P.R.M. PERMANENT REFERENCE MONUMENT
- P.S.M. PROFESSIONAL SURVEYOR & MAPPER
- P.U.D. PLANNED UNIT DEVELOPMENT
- R. RADIUS
- RAD. RADIAL
- R.P.B. ROAD PLAT BOOK
- R/W. RIGHT-OF-WAY
- SEC. SECTION
- S.F. SQUARE
- U.E. UTILITY EASEMENT

- MONUMENT MAINTENANCE AND ROOF OVERHANG EASEMENT
- OFFICIAL RECORDS BOOK
- NON-RADIAL
- PLAT BOOK
- PALM BEACH COUNTY
- PALM BEACH COUNTY RECORDS
- PALM BEACH COUNTY UTILITY EASEMENT
- PAGE
- PERMANENT CONTROL POINT
- POINT OF BEGINNING
- POINT OF COMMENCEMENT
- PERMANENT REFERENCE MONUMENT
- PROFESSIONAL SURVEYOR & MAPPER
- PLANNED UNIT DEVELOPMENT
- RADIUS
- RADIAL
- ROAD PLAT BOOK
- RIGHT-OF-WAY
- SECTION
- SQUARE
- UTILITY EASEMENT



FLORIDA'S TURNPIKE  
 D.O.T. R/W MAP  
 SECTION 930300-2510  
 LAST REV. DATE 3-15-01

MATCH LINE  
 SEE SHEET 7

L.W.D.D. CANAL E-2-E  
 129272' FROM TO PRM

35' L.W.D.D. R/W  
 (O.R.B. 27553, PG. 438, P.B.C.R.)

30' R/W  
 (P.B. 2, PG. 26-28)

10' UTILITY EASEMENT  
 (O.R.B. 6856, PG. 381, P.B.C.R.)

85' CANAL RESERVATION  
 (O.R.B. 5205, PG. 8, P.B.C.R.)

55' L.W.D.D. EASEMENT  
 (O.R.B. 27553, PG. 438, P.B.C.R.)